

# The Beacon Council

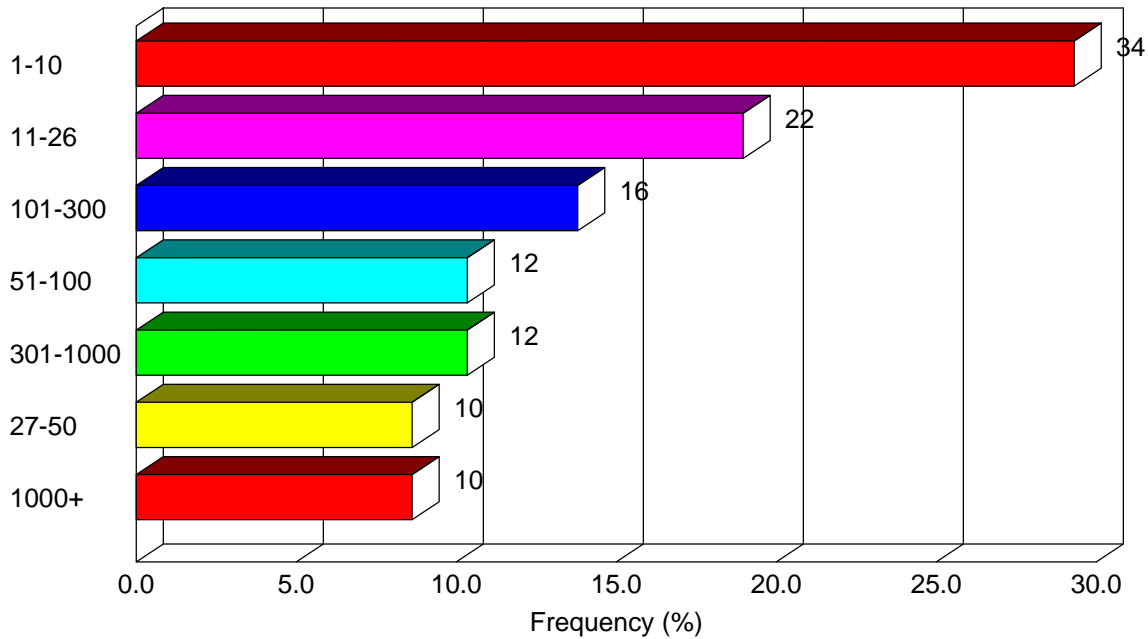
## Local Business Local Jobs Survey 2008 Results

---

### Number of Employees

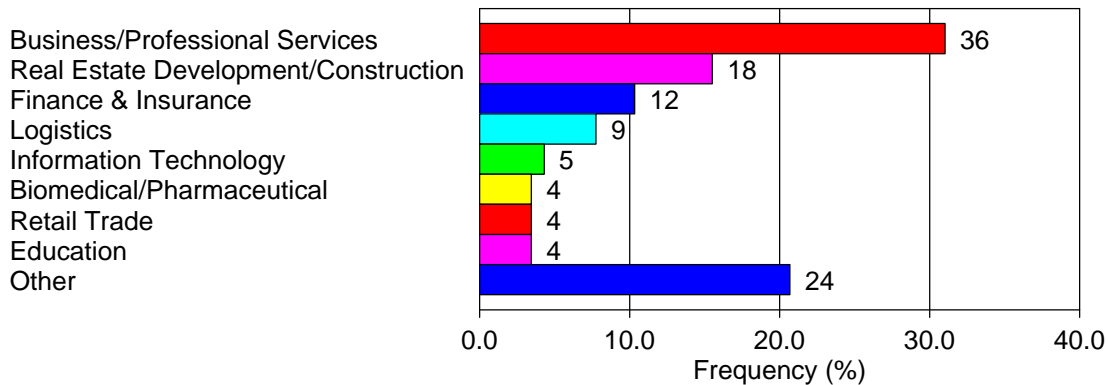
117 Survey Respondents (Some Individual Questions Left Blank)

Approximately how many full-time employees does your company employ in Miami-Dade County?



### Industry Classification

What is your industry classification?



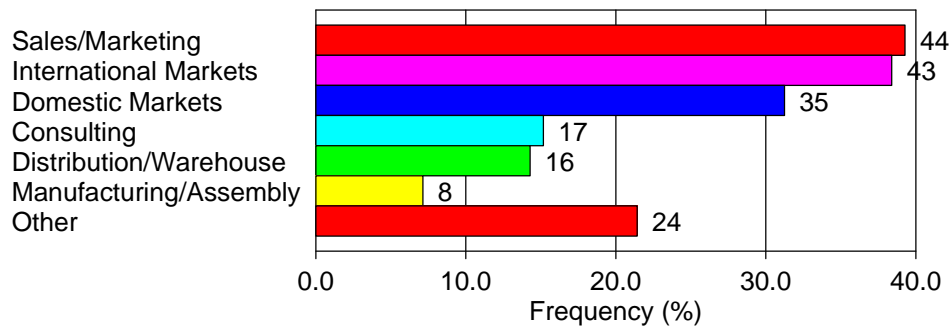
**"Other" Responses:**

What is your industry classification?

- Media
- Foundation/Philanthropic Consultant
- Luxury men's+women's
- Hot Dip Galvanizing
- Government / Parking
- Pharmaceutical printing
- OFFICE SUPPLIES AND FURNITURE
- Fashion
- Household Appliances
- Air conditioning mfg & distributor
- International Trade

**Type of Operation**

What is your type of operation? (check all that apply)\*



\* Note: Multiple answer percentage-count totals not meaningful.

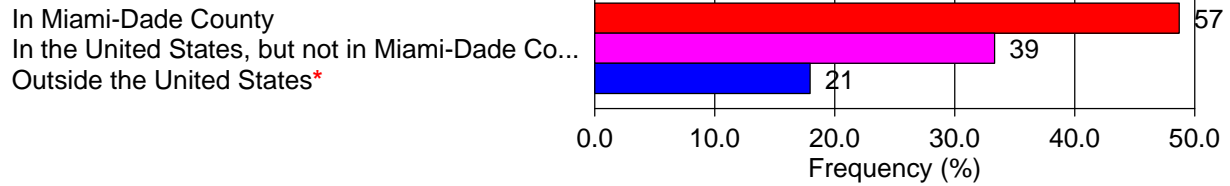
**"Other" Responses:**

What is your type of operation? (check all that apply)\*

- Development
- Law
- Logistics, purchasing, marketing
- Transportation
- Infrastructure/Development
- Real Estate Development
- Advocacy, Membership
- Bank
- Real Estate- office
- Government
- maintenance and repairs
- Business networking
- Financial Services

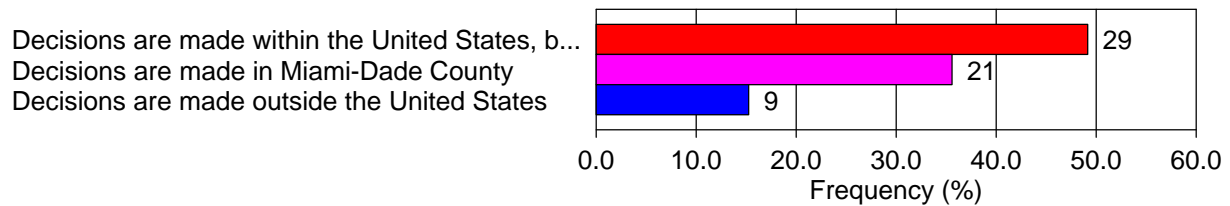
## World Headquarters/Parent Company Location

Where is your world headquarters/parent company located?



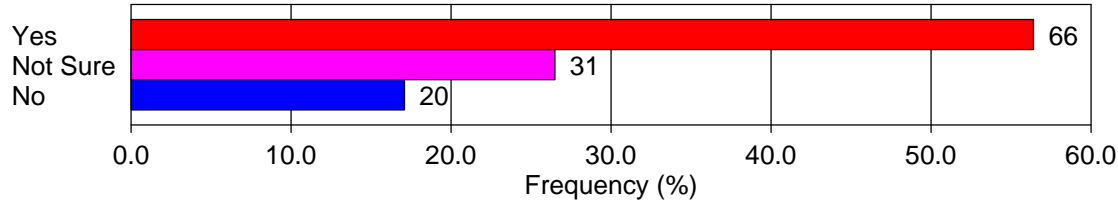
## Location Decisions

If your world headquarters/parent company is outside Miami-Dade County, where are location decisions made regarding expanding in or leaving Miami-Dade County?



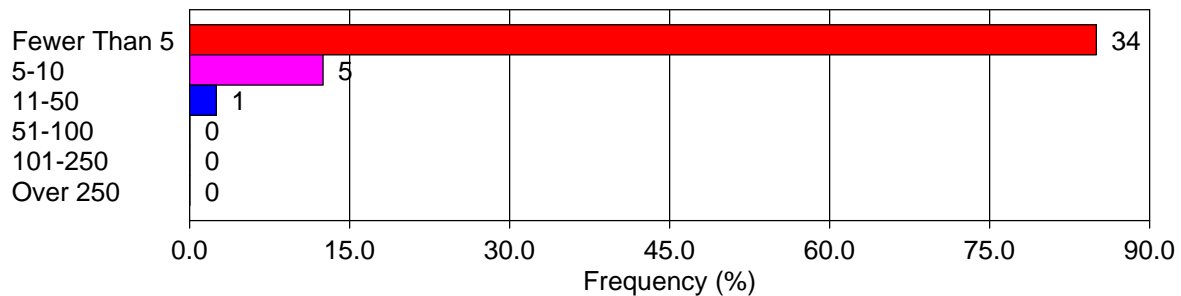
## Prospective Hiring - Miami-Dade

Does your company plan to hire additional employees during the next twelve months?



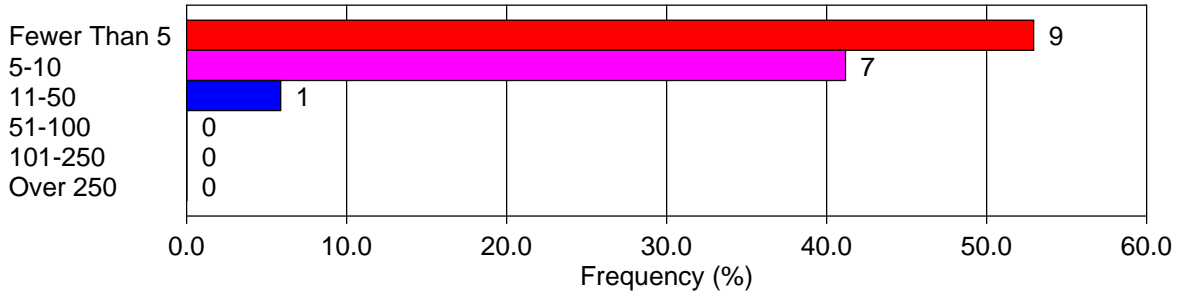
### Small Companies (1-26)

How many of these new employees do you expect to hire from within Miami-Dade County?



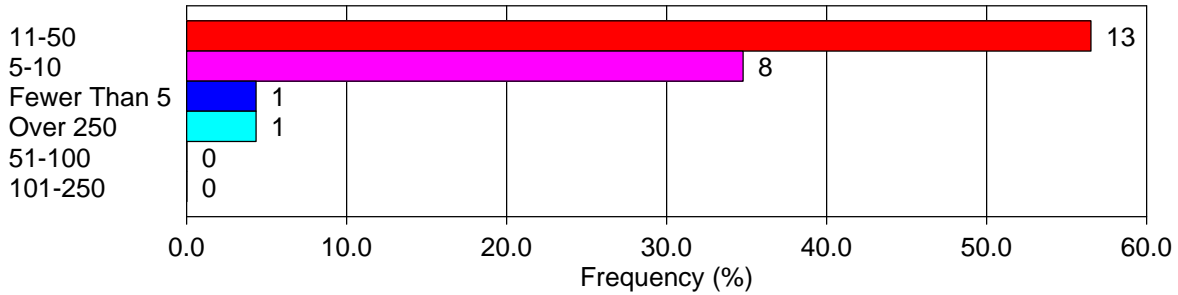
### Mid-Sized Companies (27-100)

How many of these new employees do you expect to hire from within Miami-Dade County?



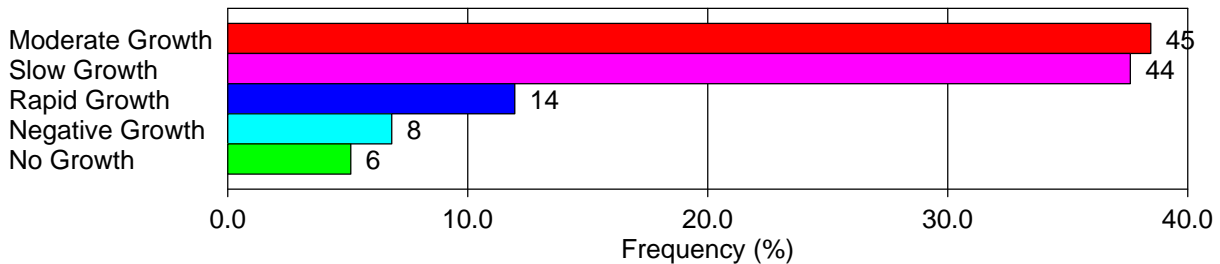
### Large Companies (101+)

How many of these new employees do you expect to hire from within Miami-Dade County?



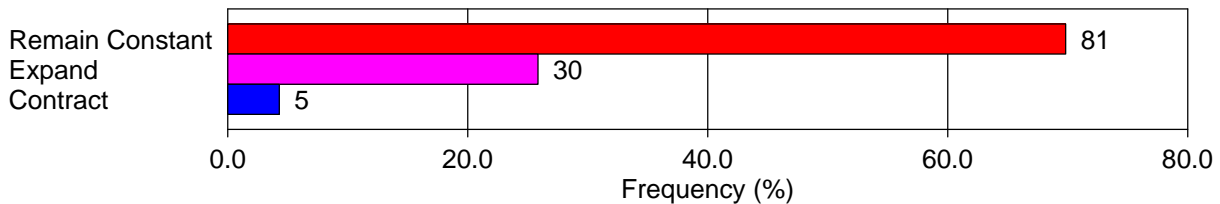
## Prospective Revenue Growth

How would you describe your company's revenue growth prospects during the next twelve months?



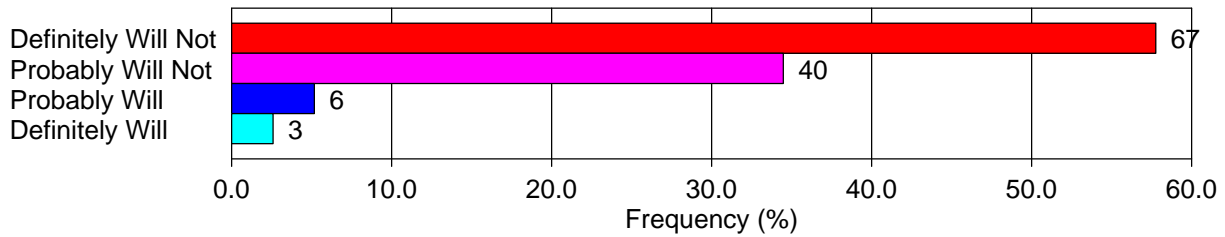
## Prospective Facility Expansion

Do you expect your company's facilities (land and/or buildings) to contract, remain constant, or expand during the next twelve months?



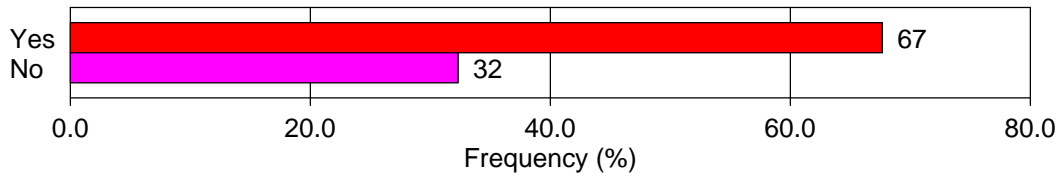
## Prospective Facility Relocation

Do you expect your company (or any part of your company) to relocate outside of Miami-Dade County during the next two years?

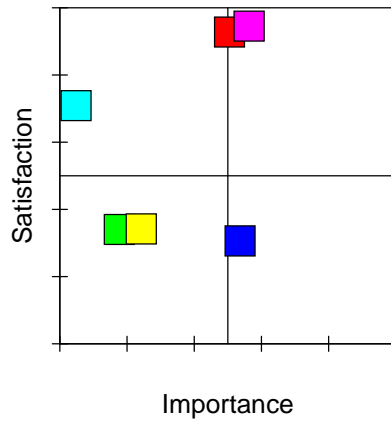


## Beacon Council Awareness

Are you aware of the services, programs and resources that are available to you through The Beacon Council?



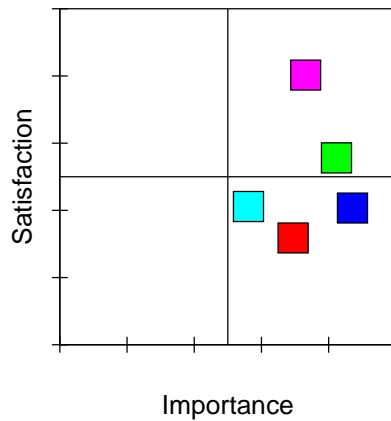
## Satisfaction and Importance Market Access



Mean

- Access to your company's international markets
- Access to your company's U.S. markets
- Quality of Miami International Airport
- Quality of Port of Miami
- Ease of obtaining U.S. work visas for foreign workers
- Ease of obtaining U.S. visitor visas by foreign business relations (vendors, clients, etc.)

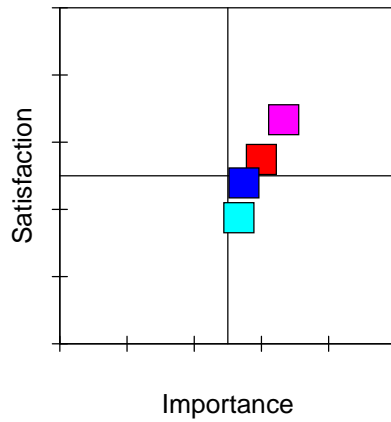
## Satisfaction and Importance Education and Labor Markets



Mean

- Quality of public primary education (K12)
- Quality of higher education (University/technical education)
- Availability of skilled professional labor
- Availability of skilled technical labor
- Cost of labor (salary, benefits)

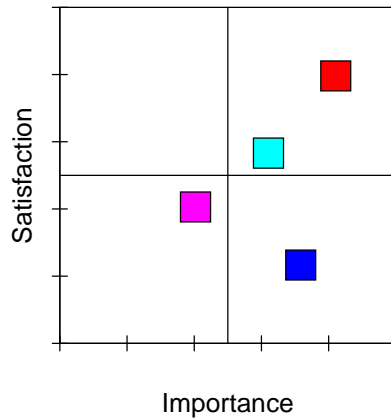
## Satisfaction and Importance Local Government Services



Mean

- Effectiveness of Miami-Dade County government leadership
- Effectiveness of city government leadership
- Effectiveness of Miami-Dade County permitting for new sites and expansions
- Effectiveness of city permitting for new sites and expansions

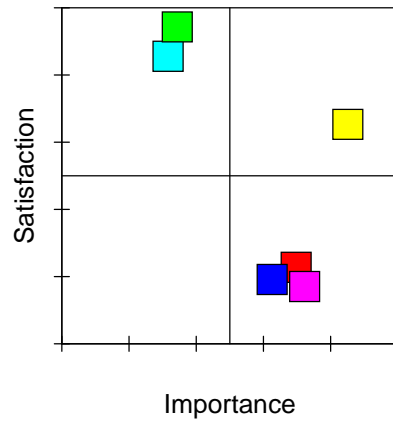
## Satisfaction and Importance Business Location



Mean

- Image of Miami as a business center
- Ability to recruit employees from outside the area
- Cost/availability of commercial real estate
- Impact of potential natural disasters (hurricanes)

## Satisfaction and Importance Quality of Life



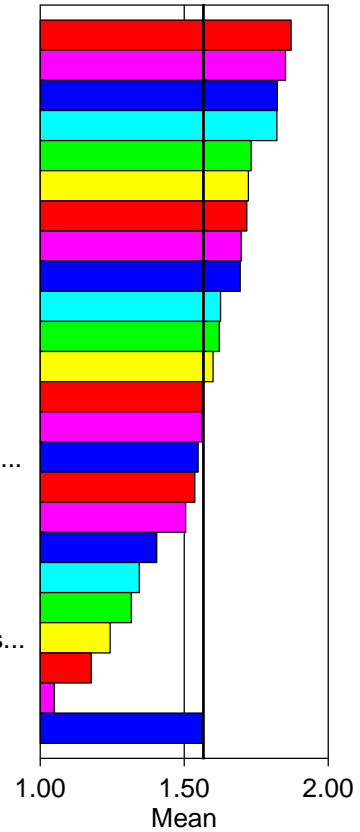
### Mean

- Red: Cost/availability of commercial insurance
- Magenta: Quality of transportation infrastructure
- Blue: Availability of affordable/workforce housing
- Cyan: Quality of cultural and arts activities and facilities
- Green: Quality of sports, recreation and leisure activities
- Yellow: Level of public safety

# Importance Mean Score Ranking

## IMPORTANCE

- Availability of skilled professional labor
- Level of public safety
- Cost of labor (salary, benefits)
- Image of Miami as a business center
- Quality of higher education (University/technical education)
- Quality of transportation infrastructure
- Cost/availability of commercial real estate
- Cost/availability of commercial insurance
- Quality of public primary education (K12)
- Availability of affordable/workforce housing
- Impact of potential natural disasters (hurricanes)
- Effectiveness of Miami-Dade County government leadership
- Access to your company's U.S. markets
- Availability of skilled technical labor
- Effectiveness of Miami-Dade County permitting for new sites and expansi...
- Quality of Miami International Airport
- Access to your company's international markets
- Ability to recruit employees from outside the area
- Quality of sports, recreation and leisure activities
- Quality of cultural and arts activities and facilities
- Ease of obtaining U.S. visitor visas by foreign business relations (vendors...
- Ease of obtaining U.S. work visas for foreign workers
- Quality of Port of Miami



## Satisfaction Mean Score Ranking

### SATISFACTION

Access to your company's U.S. markets  
 Quality of sports, recreation and leisure activities  
 Access to your company's international markets  
 Quality of cultural and arts activities and facilities  
 Quality of higher education (University/technical education)  
 Image of Miami as a business center  
 Quality of Port of Miami  
 Level of public safety  
 Impact of potential natural disasters (hurricanes)  
 Cost of labor (salary, benefits)  
 Effectiveness of Miami-Dade County government leadership  
 Effectiveness of Miami-Dade County permitting for new sites and expansi...  
 Availability of skilled technical labor  
 Availability of skilled professional labor  
 Ability to recruit employees from outside the area  
 Ease of obtaining U.S. visitor visas by foreign business relations (vendors...  
 Ease of obtaining U.S. work visas for foreign workers  
 Quality of public primary education (K12)  
 Quality of Miami International Airport  
 Cost/availability of commercial real estate  
 Cost/availability of commercial insurance  
 Availability of affordable/workforce housing  
 Quality of transportation infrastructure  
 SATISFACTION

